

Product descriptions

Line is not just a single profile lighting, but also a system of LED modulars that can be combined to any length and to create almost any configuration imaginable for interior spaces. Besides its compact structure, Line series is even designed with independent direct/indirect lighting output with separate intelligent control of brightness or color temperature, including three different types: anti-glare louvre for free glare, micro-prismatic diffuser for high visual comfort, opal PC diffuser for high efficiency. High-quality materials, Minimalist look, Versatile technology gives Line excellent aesthetics and high performance.

Technical data

Input	AC220V
Power consumption	96W
CRI	>90
CCT	3000K
Beam angle	64°
Chromaticity tolerance	<3 SDCM
Rated lifetime	50000H (Ta 25°C)
Dimming method	On-off or DALI/Wireless
Dimming range	On-off or 0-100%

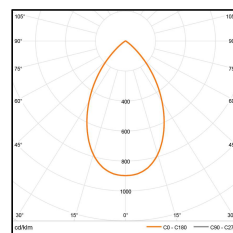
Product features

- Compact, distinctively rectangular aluminium profile
- Direct light guided by high-efficiency LED minicell technology with highly specular reflector
- High visual comfort
- On-off/DALI/Wireless dimming available
- DALI versions occupy 2 addresses
Wireless versions occupy 2 addresses
- Single or continuous line available

- Profile - matt white/matt black
Louvre – specular silver/specular black

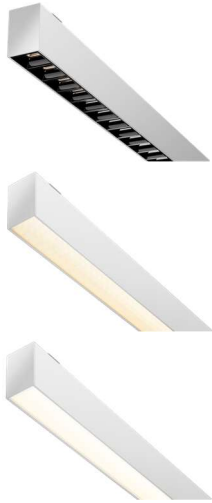
Luminous intensity distribution curve

LED 76W 7600lm 3000K



L/m	2.4
W/m	0.8
H/m	1.5 1.2
Ēm/lx	975 1239
QTY	1 1

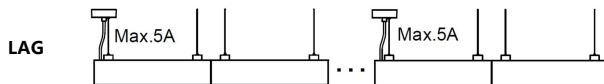
L: length of desk
W: width of desk
H: height of luminaire to desk
Ēm: average illuminance on desk



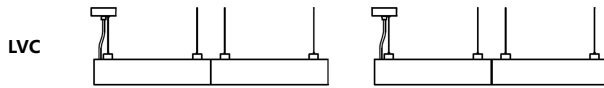
Series	Length	Direct	Indirect	Color	Install
LAG	565mm	• Louvre	• LGP	15/16/25/26	Pendant
	1125mm	• Louvre	• LGP	15/16/25/26	Pendant
	1685mm	• Louvre	• LGP	15/16/25/26	Pendant
	2245mm	• Louvre	• LGP	15/16/25/26	Pendant
LVC	565mm	• MP	• LGP	01/02	Pendant
	1125mm	• MP	• LGP	01/02	Pendant
	1685mm	• MP	• LGP	01/02	Pendant
	2245mm	• MP	• LGP	01/02	Pendant
LHE	565mm	• PC	• LGP	01/02	Pendant
	1125mm	• PC	• LGP	01/02	Pendant
	1685mm	• PC	• LGP	01/02	Pendant
	2245mm	• PC	• LGP	01/02	Pendant

Mounting restriction

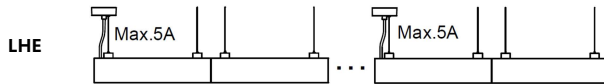
Single or continuous line available. The maximum load current should not exceed 5A.



Two luminaires at most could be jointed together



Single or continuous line available. The maximum load current should not exceed 5A.



The maximum length of PC: 30 meters

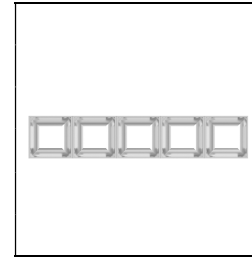
Installation Info

Pay attention to the following information when or before installation:

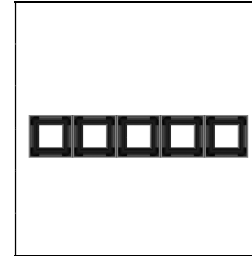
Standard length of suspension cord: 1.5 meters;

Standard length of supply cord: 1.7 meters;

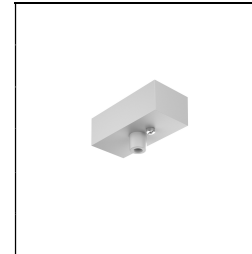
DO NOT reduce the quantity of suspension cord when two or more luminaires are jointed together.



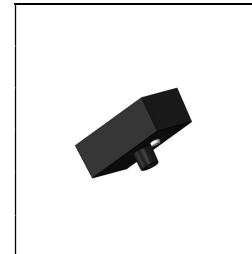
M9106101.001
Louvre
Specular silver



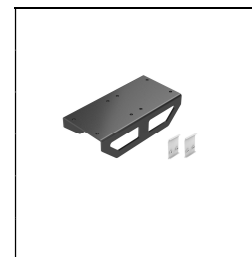
M9106101.002
Louvre
Specular black



M9103109.004
Junction box
White



M9103109.005
Junction box
Black



M9103109.009
Junction box with
side opening
Black



M9106101.003
Connecting
device