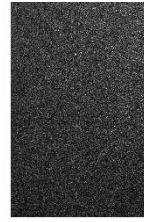




X25TS



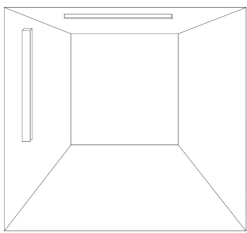
X50TS

**Instruction of installation :**

- Read the instructions carefully before installation and commissioning.
- The safety of the device can only be guaranteed on condition that to be respected the following instructions, both stages of installation and use therefore it is highly recommended to keep them.
- When installing, always observe the national installation and accident prevention regulations.
- Installation and commissioning may only be carried out by authorized specialists.
- The device cannot be in any case modified or forced, any modification might jeopardize the safety system making it dangerous. LiteMatrix declines any responsibility on modified products



**FOR INDOOR USE ONLY!**



**ATTENTION:** Only products of Litematrix can be installed on tracks of System X.

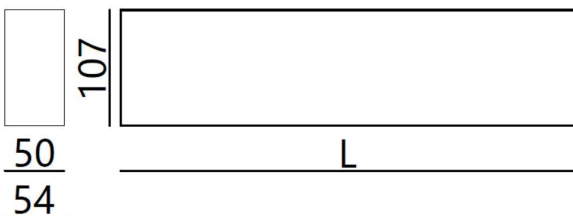
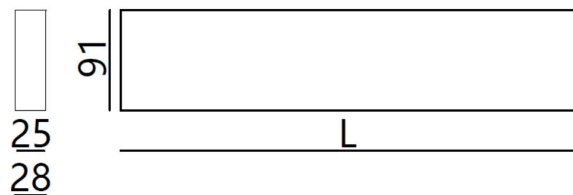
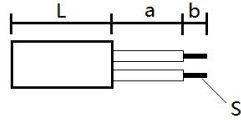
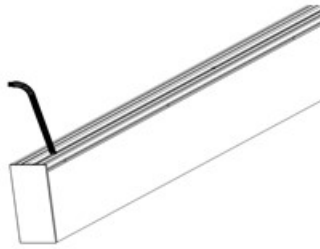


Table 1 - Parameters

	Length	Width	Wire-in method
	L/mm	mm	
X25TS	500	25	Side/Top
	1000	25	Side/Top
	2000	25	Side/Top
X50TS	500	50	Side/Top
	1000	50	Side/Top
	2000	50	Side/Top

- Please DO NOT exceed the load-bearing of ceilings.
- Recommended mounting and using environment: Ta=25°C.



Red: 24V DC+; Black: 24V DC-; Yellow: D1; Translucent: D2

Table 2 – Parameters of power supply

	Art. No.	$U_{in}/U_{out}$	$P(max)$	$L(max)$	$S(max)$	$a$	$b$
		V	W	m	mm <sup>2</sup>	mm	mm
Constant Voltage Power Supply	M9102103.005	220VAC/24VDC	60	0.5	1.5	30	7
	M9102103.010	220VAC/24VDC	100	0.5	1.5	30	7
	M9102103.012	220VAC/24VDC	150	0.5	1.5	30	7
	M9102103.013	220VAC/24VDC	200	0.5	1.5	30	7
	M9102103.014	220VAC/24VDC	240	0.5	1.5	30	7

**ATTENTION:**

\*Maximum length allowed for interconnection of one single power supply :

$$L = 720/P$$

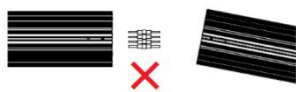
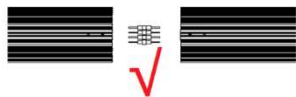
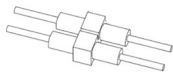
L : Maximum length

P : Total load power (not more than **80%** of rated power) on track

**If length or power exceed, please contact with LiteMatrix before.**

**Power supply should be ordered separately.**

**Terminals**

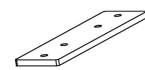


**Construction accessories**

(False tracks)



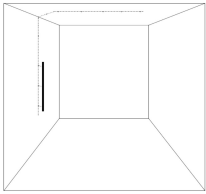
(Fixing device)



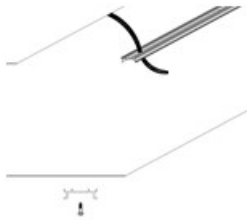
### Installation

1. During the installation, make sure the power supply is disconnected. Put on gloves and operate in dry environment

1. Draw construction plan



2. Install false track



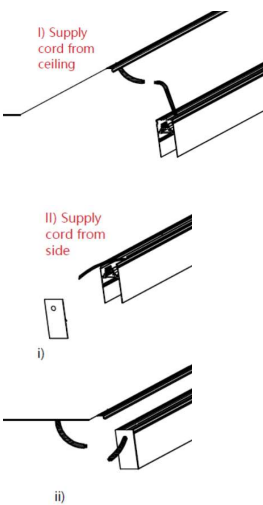
3. Connect to power supply

#### ATTENTION:

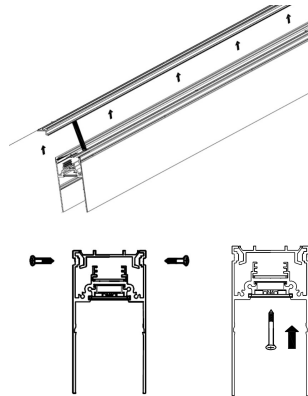
For safety consideration, during the installation, make sure the power supply is disconnected.

Avoid any damage to supply cable.

L-type tracks can be served as live end.

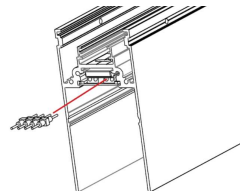


4. Fix tracks from bottom or side via screws onto false tracks

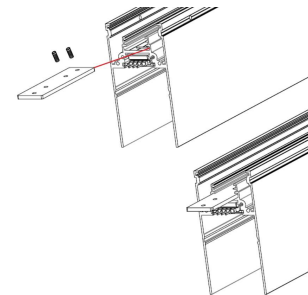


### Continuous parts installation

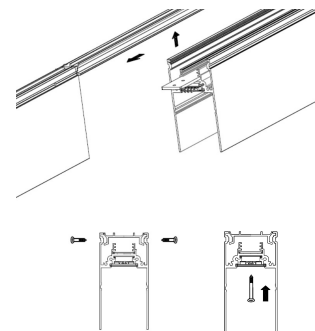
1. Insert terminals



2. Install fixing device



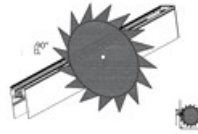
3. Assemble the two parts together alongside the false tracks, then fix them via screws.



4. Assemble other tracks

### Cut Profile

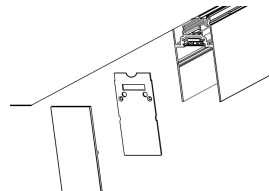
**ATTENTION:** Only the last and linear tracks can be cut.



Track/mm	Cut off/mm	Left/mm
500	<240	>260
1000	<500	>500
2000	<500	>1500

### End caps installation

DO NOT forget to install end caps



**ATTENTION:** Dismantle or remove the tracks should be under professional instructions.

### Cleaning

Always clean carefully using a soft cloth and a commercially available, pH-neutral, alcohol-free, non-abrasive cleaning agent.

### Disposal



In accordance with EU Directive WEEE (Waste Electrical and Electronic Equipment), luminaires must not be disposed of with other household waste. At the end of their life, luminaires must be taken to the appropriate local facility available for the disposal or recycling of electronic products.